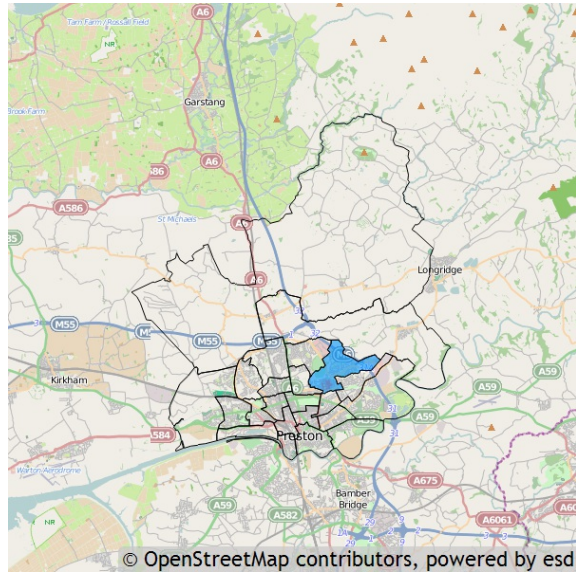


## Basic facts about Garrison

Garrison is one of the 22 wards of Preston. It has an area of 358.32 hectares which represents 2.51% of the total local authority area of Preston.



### Residents

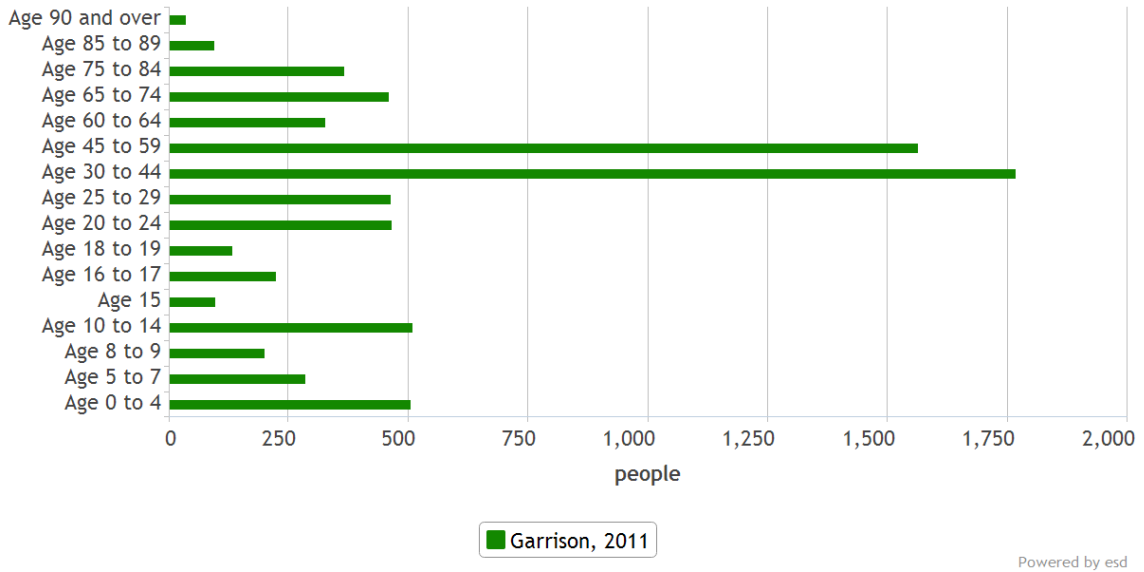
Garrison has a resident population of 7,503 which represents 5.35% of the total local authority resident population of 140,202.

### Age

The mean age of the Garrison population is 37 years which is equal to the mean age of 37 years for residents in the whole local authority. The predominant age band is Age 30 to 44.

### Age structure

source: Census 2011

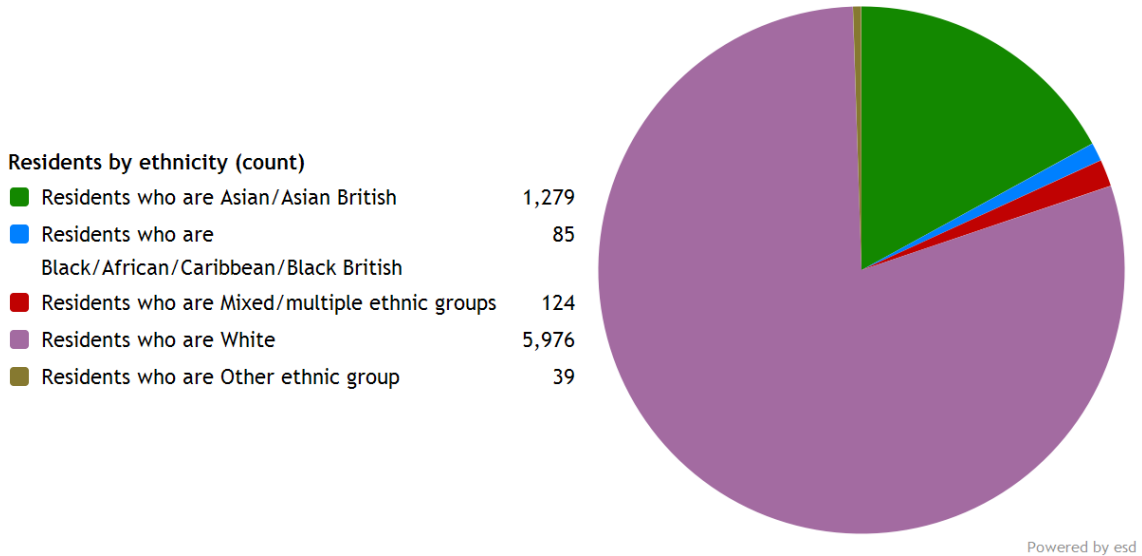


## Ethnicity

The largest ethnic group is *Residents who are White* with 79.6% of the ward's population. That compares with 80.2% for the local authority as a whole, 90.2% for North West and 85.4% for the whole of England.

The second largest ethnic group is *Residents who are Asian/Asian British* with 17.0% of the ward's population. That compares with 15.5% for the local authority as a whole, 6.2% for North West and 7.8% for the whole of England.

The ethnic split of Garrison's residents is shown below.



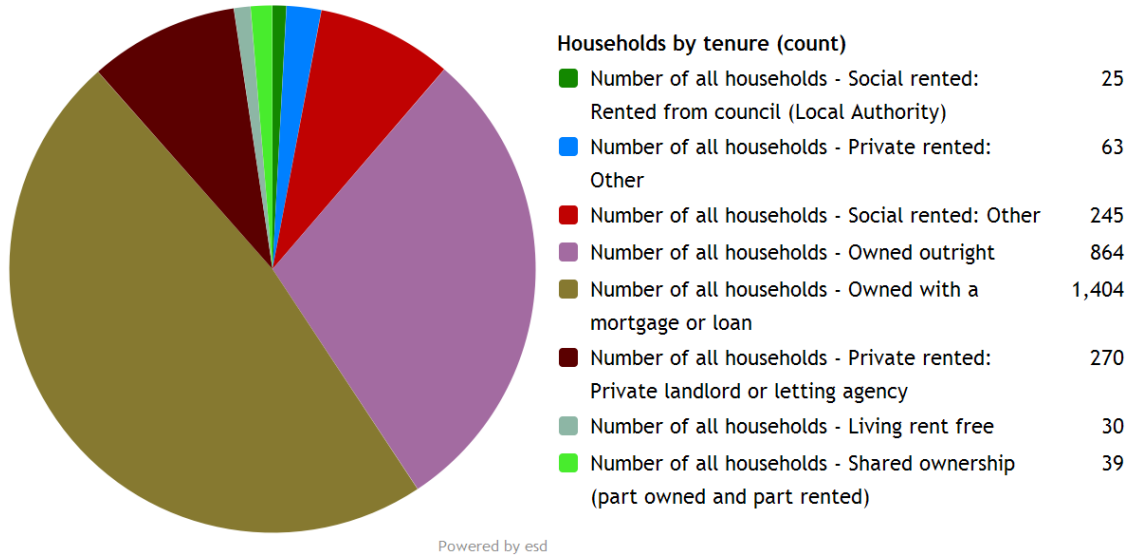
Garrison's resident population is 50.8% female and 49.2% male.

The ward has 406 households with **dependent children aged 0 to 4**. That represents 13.81% of the ward's households.

1,040 households in the ward have **dependent children of all ages**. That represents 35.37% of the ward's households.

## Households

Garrison has 2,940 households, which represent 5.11% of Preston's 57,567 households. The household split by tenure is shown below.



The largest number of households lives in *Number of all households - Owned with a mortgage or loan* accommodation with 47.8% of the ward's households. That compares with 32.2% for the local authority as a whole, 33.2% for North West and 34.5% for the whole of England.

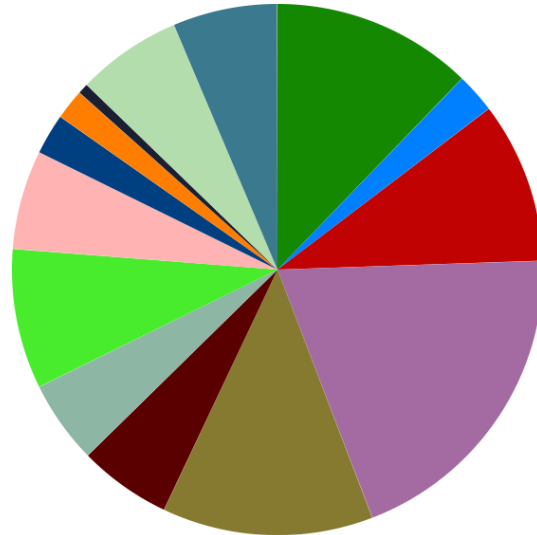
The second largest number of households lives in *Number of all households - Owned outright* accommodation with 29.4% of the ward's households. That compares with 28.4% for the local authority as a whole, 28.6% for North West and 32.8% for the whole of England.

## Employment

A breakdown of Garrison by socio-economic classification is given below.

### Residents by NS-Sec (count)

NS-Sec: Higher managerial, administrative and professional	838
NS-Sec: Large employers and higher managerial and administrative	166
NS-Sec: Higher professional	672
NS-Sec: Lower managerial, administrative and professional	1,351
NS-Sec: Intermediate	880
NS-Sec: Small employers and own account workers	386
NS-Sec: Lower supervisory and technical	347
NS-Sec: Semi-routine occupations	583
NS-Sec: Routine occupations	413
NS-Sec: Never worked and long-term unemployed	170
NS-Sec: Never worked	127
NS-Sec: Long-term unemployed	43
NS-Sec: Not classified	437
NS-Sec: Full-time students	437
NS-Sec: Not classifiable for other reasons	0

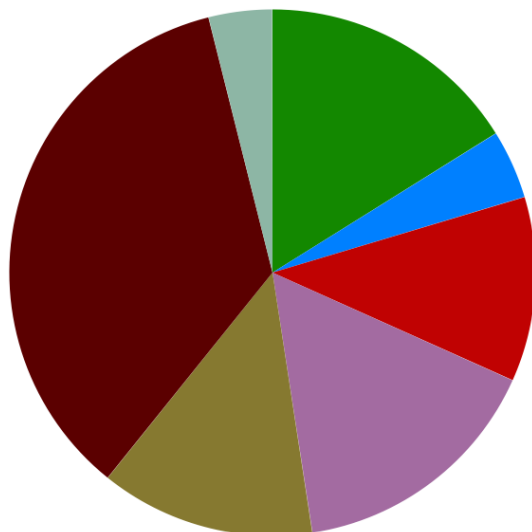


Powered by esd

The largest group is NS-Sec: Lower managerial, administrative and professional representing 25.00% of the ward's population.

30 of the lone parent households in Garrison are not in employment.

## Education



### Residents by educational qualifications (count)

No qualifications	953
Apprenticeship	250
Level 1 qualifications	670
Level 2 qualifications	937
Level 3 qualifications	779
Level 4 qualifications and above	2,085
Other qualifications	231

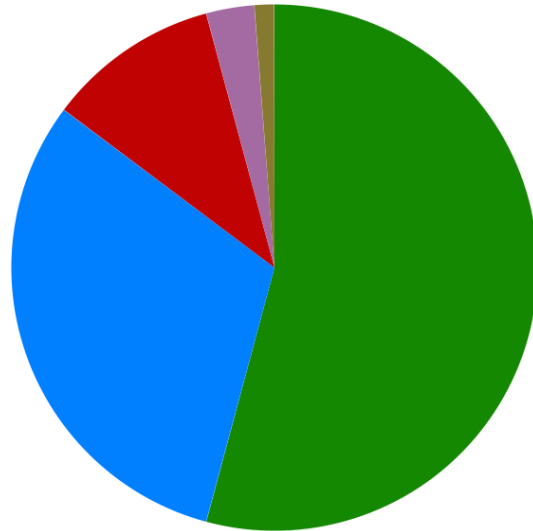
Powered by esd

The highest level of educational qualification achieved by the biggest group of Garrison residents is Level 4 qualifications and above, which applies to 35.31%.

## Health

### Residents by level of health (count)

Very good health	4,066
Good health	2,330
Fairly good health	794
Poor health	222
Very bad health	91



Powered by esd

Garrison has 222 (2.96%) residents in poor health and 91 (1.21%) residents in very bad health.

Its ranking for the number of residents in very bad health is 14 (out of 22) within Preston, 462 (out of 935) within North West, and 5,167 (out of 7,707) within England.

## Glossary

Metrics used in this report are as follows:

**Residents by age group (count).** Source: Office for National Statistics. Dataset: Census 2011. <http://www.ons.gov.uk/ons/guide-method/census/2011/census-data/index.html>

**Residents by ethnicity (count).** Source: Office for National Statistics. Dataset: Census 2011. <http://www.ons.gov.uk/ons/guide-method/census/2011/census-data/index.html>

**Households by tenure (count).** Source: Office for National Statistics. Dataset: Census 2011. <http://www.ons.gov.uk/ons/guide-method/census/2011/census-data/index.html>

**Residents by NS-Sec (count).** Source: Office for National Statistics. Dataset: Census 2011. <http://www.ons.gov.uk/ons/guide-method/census/2011/census-data/index.html>

**Residents by educational qualifications (count).** Source: Office for National Statistics. Dataset: Census 2011. <http://www.ons.gov.uk/ons/guide-method/census/2011/census-data/index.html>

**Residents by level of health (count).** Source: Office for National Statistics. Dataset: Census 2011. <http://www.ons.gov.uk/ons/guide-method/census/2011/census-data/index.html>

