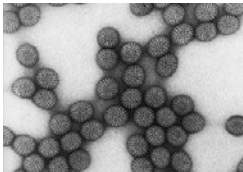


Factsheet 68: **Food Safety**

Rotavirus



Rotavirus is the most common cause of infantile gastroenteritis. Almost every child will have an infection before her/his fifth birthday. Infection in adults is uncommon because immunity is long-lasting. It has been estimated that approximately 18,000 children are hospitalised annually in England and Wales due to rotavirus-related disease.

Incubation period

Approximately 48 hours.

Common clinical features

Diarrhoea, vomiting.

Reservoir

Gastrointestinal tract of man.

Transmission

Person to person by faecal oral route by environmental contamination.